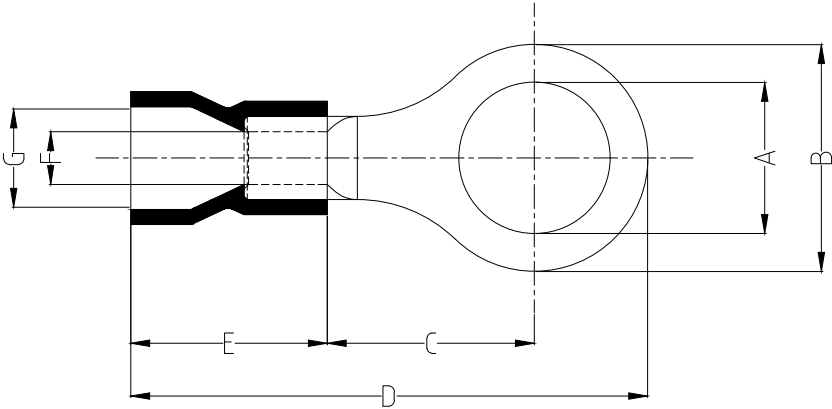
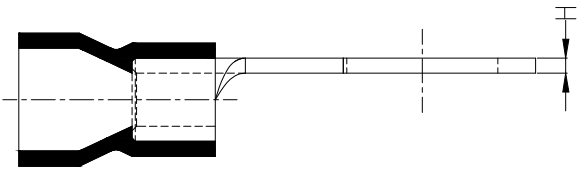


1 2 3 4 5 6 7 8

| REV | LOCATIONS | DESCRIPTION | DATE | REVISER | APPD |
|-----|-----------|-------------|------|---------|------|
| | | | | | |

Notes:

Material: Copper
 Insulator: PVC (UL 94V-0) Red
 Plating: Matte tin plated
 Wire range: 0.5~1.5mm² / (22~16AWG)
 Applicable screw: #10 UNC
 Temperature Range—Operating: 0°C~75°C
 Maximum electrical rating: 600V
 Max current: 19A



| PART NO. | Dimensions | | | | | | | |
|---------------------|------------|------|-----|------|------|------|------|-------|
| | A | B | C | D | E | F | G | H |
| FRT03-00125050SARD2 | ±0.3 | ±0.5 | ±1 | ±1 | ±1 | ±0.5 | ±0.5 | ±0.05 |
| | 5.3 | 8.0 | 7.0 | 21.0 | 10.0 | 1.7 | 4.2 | 0.7 |

| | | | | | | | | | |
|-------------------------------|---------------------------------------|-------------|--------------|-----------|----------------------|--|--|-------|---------------|
| <p>THIRD ANGLE PROJECTION</p> | GENERAL TOLERANCES (UNLESS SPECIFIED) | | APPROVE BY | DATE | PART NO. | ITEM NO. | <p>Building Technology Cornerstone</p> | | |
| | X. ±0.30 | X.* ±5' | LEO | 09/JAN/21 | FRT03-00125050SARD2 | FRT03 | | | |
| | DESIGN UNITS mm | | CHECKED BY | DATE | TITLE | | | REV 0 | SHEET NO. 1/1 |
| | X.X ±0.20 | X.X' ±2' | GISELLE | 09/JAN/21 | Ring tongue terminal | | | | |
| SCALE 5:1 | SIZE A4 | X.XX ±0.15 | X.XX' ±1' | DRAWN BY | DATE | THIS DRAWING CONTAINS INFORMATION THAT IS PROPRIETARY TO TXGA INDUSTRIAL ELECTRONICS(S.Z)CO.,LTD AND SHOULD NOT BE USED WITHOUT WRITTEN PERMISSION | | | |
| | | X.XXX ±0.10 | X.XXX' ±0.5' | PYD | 09/JAN/21 | | | | |

1 2 3 4 5 6 7 8